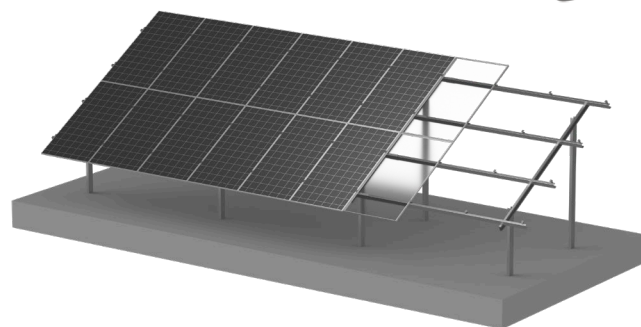


METAGROUND-**STEEL-C**

Steel Ground Mounting System



METAGROUND-**STEEL-C**

STEEL GROUND MOUNTING SYSTEM

/ FEATURE /

1. Suitable for all wind regions in Australia.
2. Easy to install and quick to remove.
3. Highly pre-assembled for one-handed operation of Mid clamp and End clamp to save installation time.
4. Easy to carry and requires only one set of tool.

/ SPECIFICATION /

System Name	Double column steel mounting system.
Installation Site	Ground
Tilt Angle	$\leq 45^\circ$
Wind Load	$\leq 72\text{m/s}$ (Wind Regions A,B,C and D)
Snow Load	$1.0\text{KN/m}^2 \sim 2.0\text{KN/m}^2$
Applicable Solar Module	Framed
Panel Layout	Portrait/Landscape
Design Standard	AS-NZS 1170
Material	Q420B, S420, AL-6005-T6, SUS304
Color	Silver/Black
Warranty	25-year

/ COMPONENT /

1		C Steel (Rail, Column, Beam and Bracing)	5		Inter Clamp Combo (Flat land)
2		Rail Splice	6		Inter Clamp Combo (Slope land)
3		End Clamp Combo (Slope Land)	7		Rail Clamp for Flat land
4		End Clamp Combo (Slope Land)	8		Rail Clamp for Slope land